

# SUPER STONE

PU STONE PANEL

COLOR  
BOX®  
*Choice of Your Interiors*





**COLOR  
BOX**®  
*Choice of Your Interiors*





# SUPER STONE

PU STONE PANEL



## ABOUT SUPER STONE

Super Stone Panels are made of High density polyol technology. It's very light in weight, but strong and durable. Unlike 100% real stone which are heavy and mineral composite manufactured stone; Super stone sidings are 1 lbs per square feet, less than 1/10 weight of natural stone or manufactured stone.

Super Stone Panels are easy to cut with a conventional hand saw and can be easily installed by screws. Installing faux stone for exterior as stone siding or interior stone wall, we do not need any mortar, just normal screws. DIY-friendly lightweight; Super stone boards are good for retails or on-line shop.

Panelized design makes installation go faster than individual stone. No need of mortar to fit all individual pieces together, saves much time and labor-cost for installation.

As exterior use faux stone siding, our panels are certified by ASTM-G155 UV resistant, ASTM-E330 Wind resistant and ASTM-D6413 / D6413M fire resistant tests.

Casting from the real stone and hand-painted texture, our Super Stone Panels are realistic, similar to actual Stone with close look and it is much better than other simulated stone vinyl siding, plastic stone siding which with a metal layer, foam core.

Super Stone board is the 1<sup>st</sup> & ONLY PU Stone Board Manufacturer in India with different patterns & designs.



# SUPER STONE

PU STONE PANEL



## FEATURES OF SUPER STONE



**Simulation Appearance:** The product mould of Super stone is finely polished according to the real stone, and with special processing, the appearance of the product is realistic and delicate, which is indistinguishable from the real stone.



**Long Lasting:** Super stone has a long service life and saves costs. The Super stone is composed of polymer materials and sprayed with multiple layers of high-strength coatings to make it resistant to acid, sunscreen, and ultraviolet rays, and to last longer.



**Environmentally friendly and pollution-free:** Polyurethane products are non-polluting, non-toxic and tasteless. Due to the properties of the raw materials, the synthesis of Super stone does not add too many artificial materials.

**Easy to install:** The installation of Super stone does not require high technical requirements for construction personnel, and non-professionals can also install according to the drawings. Super stone can be used on almost any dry flat substrate indoors, and the direct installation time and the time period required for the entire project are far less than the installation time of traditional cultural stone products. Super stone products are designed with an inner card structure, with tongue edges, full grooves and reserved seams. It can be installed directly with screws and gun nails.



# SUPER STONE

PU STONE PANEL



**Inflammable and Heat Resistant:** It is a safe material option to install in and around your fireplace, so you won't have to worry about any wall damage happening unknown to you.



**Water-proof:** Super stone has a layer of self-developed coating, with waterproof and flame retardant functions.



**Lightweight:** Super stone is made of PU as the main material, and anticorrosion polymer materials are added, and the weight per panel is only 3 kg approx for 8 sq.ft. Since Super stone is made of high-tech materials, it is light in weight and does not require the cooperation of other machinery, and can be installed by a single person.



**Keep warm function:** PU stone integrates the advantages of an external thermal insulation system and has thermal insulation function.



**Novel appearance:** The Super Stone style can be adapted to random designs, with strong texture and various shapes, and can be customized according to special requirements.



**Temperature Resistance:** The temperature resistance of Super stone is minus 20 degrees - high temperature 120 degrees.



# SUPER STONE

PU STONE PANEL



## INSTALLATION PROCESS OF SUPER STONE

**Treatment of the grassroots:** Before construction, clean the impurities on the surface of the base of the wall to ensure that the wall is basically flat.

**Wipe the leveling layer:** The leveling layer is to use cement mortar in a ratio of 1:3, and fiber cement board or wood plywood is used as the base for indoor use.

**Arranging bricks, dividing grids, and elastic lines:** In principle, the width of the brick joints is 8mm, and the whole bricks must be used for dividing and arranging bricks. If the whole brick cannot be used, the ash joint should be adjusted. If it cannot be adjusted, the whole brick should be cut.

**Paste Super Stone:** The Super stone should be inlaid from bottom to top, and the bonding thickness should be between 20 and 50mm.

**Pointing:** According to the material and depth required by the design, the jointing is carried out horizontally and then vertically to ensure the effect of continuous, straight, smooth, no crack and no hollow.

**Clean the surface:** When the surface is dry and the cement slurry is dry quickly, wipe the whole with dry cotton yarn, and then rinse the paved PU stone with clean water.



# SUPER STONE

PU STONE PANEL



## APPLICATION OF SUPER STONE

- On the basis of light weight and firmness, Super stone can withstand all kinds of grinding: it can be nailed, sawn, washable, etc. As a cross-border material, PU stone has its own characteristics that make it appear and widely used In the wall decoration of different scenes in the interior.
- Now Super stone has been widely used in airports, hotels, building materials, automobile factories, coal mines, cement factories, high-end apartments, villas, landscaping, colored stone art, parks, etc.
- In the living room, Super stone is used as an indoor TV background wall. Its malleability enables it to replace cultural stone and adapt to various styles and colors, bringing a sense of design to the space.
- In the bedroom, the bedside background wall of the bedroom is also decorated with Super stone, which brings a more natural and calm rest environment while decorating the wall.
- In the study room, the scholarly study space is the collision of diverse knowledge and diversity, and the wall shape endows the space with more possibilities.
- In the bathroom, the dark bathroom is matched with the PU stone with its own three dimensional texture, which shows the dark and glamorous texture vividly.
- The use of mixed materials in contemporary art is not only more and more common, but also has infinite possibilities to represent future trends.



## MEGA STONE - PC1

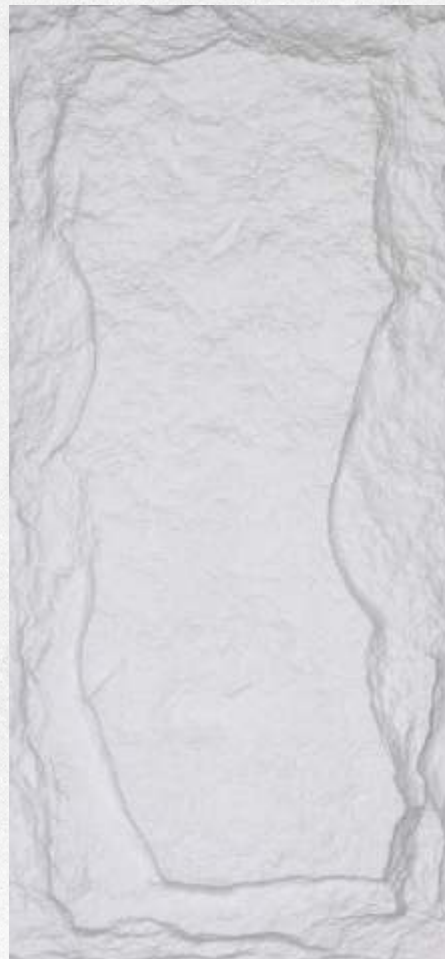
SIZE: 4ft x 2ft

THICKNESS: 50mm - 65mm

### PU STONE PANEL



**PC1**  
**Pumpkin Orange**



**\*PC1**  
**Ice White**



**\*PC1**  
**Ivory**





**PC1  
Beige**



**PC1  
Cement Grey**



**\*PC1  
Charcoal Black**



**\*PC1  
Ash Grey**



# SUPER STONE

PU STONE PANEL

**COLOR  
BOX**®  
*Choice of Your Interiors*

VIENNA STONE - PC2

SIZE: 4ft x 2ft

THICKNESS: 25mm - 35mm



PC2  
Pumpkin Orange



\*PC2  
Ice White



PC2  
Ivory





**PC2  
Beige**



**PC2  
Charcoal Black**



**\* PC2  
Cement Grey**



**PC2  
Ash Grey**



# SUPER STONE

PU STONE PANEL

**COLOR  
BOX**®  
*Choice of Your Interiors*

MADRID STONE - PC3

SIZE: 4ft x 2ft

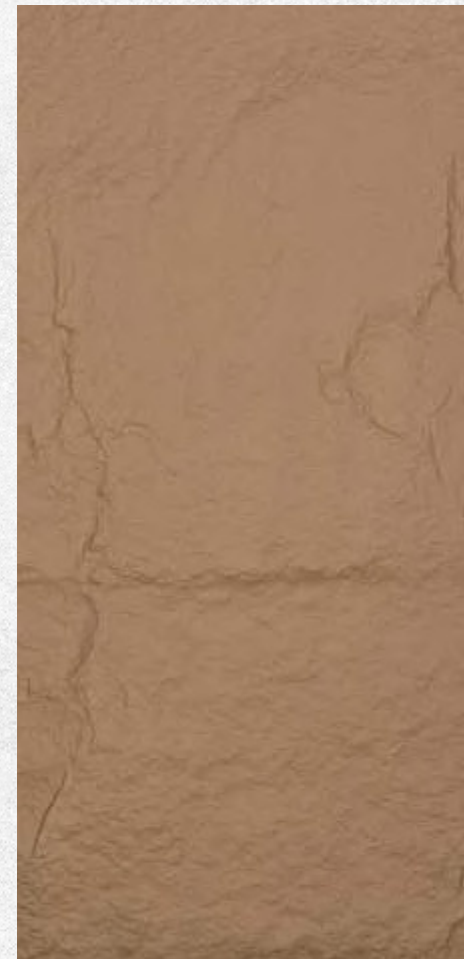
THICKNESS: 25mm - 35mm



PC3  
Pumpkin Orange



\*PC3  
Ice White



\*PC3  
Ivory

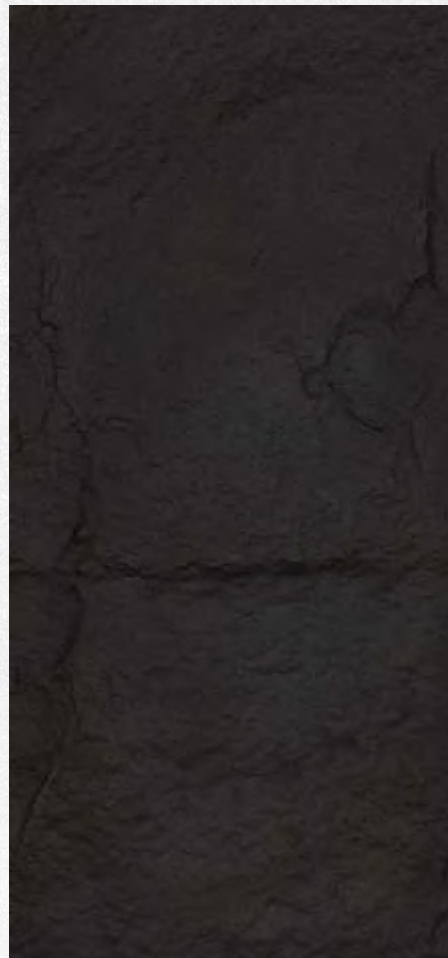




**PC3  
Beige**



**\*PC3  
Cement Grey**



**PC3  
Charcoal Black**



**\*PC3  
Ash Grey**











# SUPER STONE

PU STONE PANEL

**COLOR  
BOX**®  
*Choice of Your Interiors*

**BERLIN STONE - PC4**

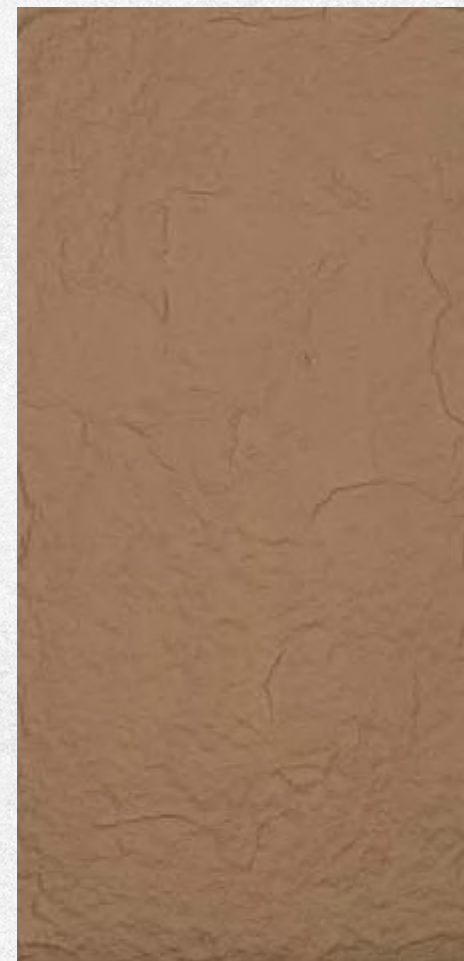
SIZE: 4ft x 2ft  
THICKNESS: 20mm - 25mm



**PC4**  
**Pumpkin Orange**



**\*PC4**  
**Ice White**



**PC4**  
**Ivory**

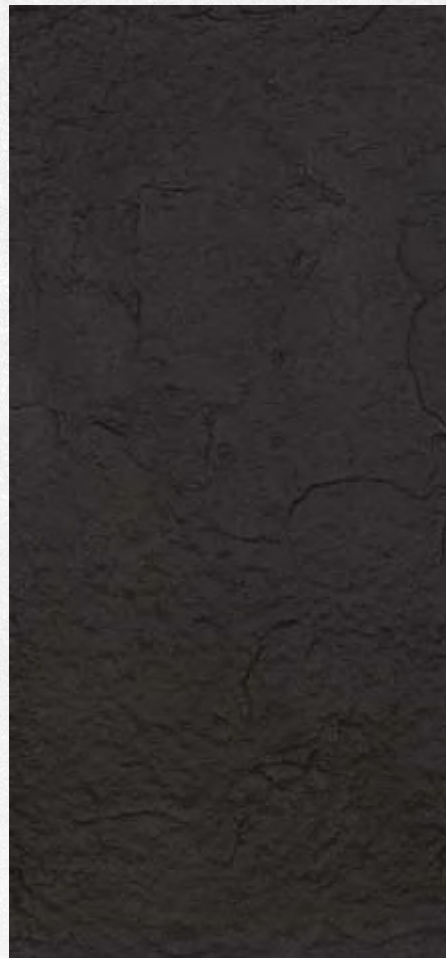




**PC4  
Beige**



**\* PC4  
Cement Grey**



**PC4  
Charcoal Black**



**PC4  
Ash Grey**



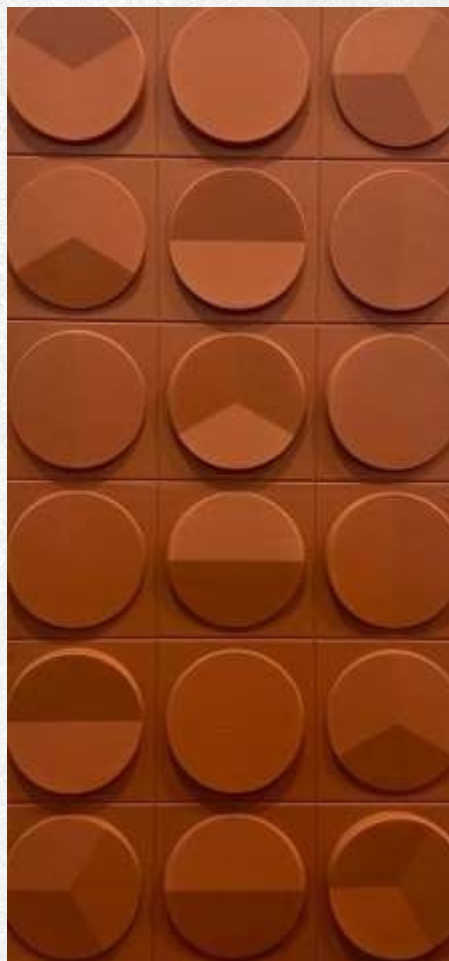
# SUPER STONE

PU STONE PANEL

**COLOR  
BOX**®  
*Choice of Your Interiors*

## OPERA ROUNDS - PC5

SIZE: 4ft x 2ft  
THICKNESS: 25mm - 30mm



**PC5**  
**Pumpkin Orange**



**PC5**  
**Ice White**

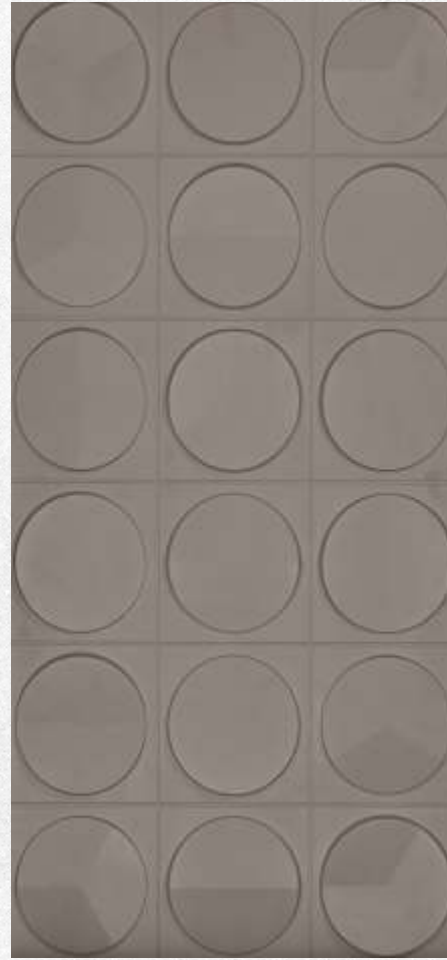


**PC5**  
**Ivory**





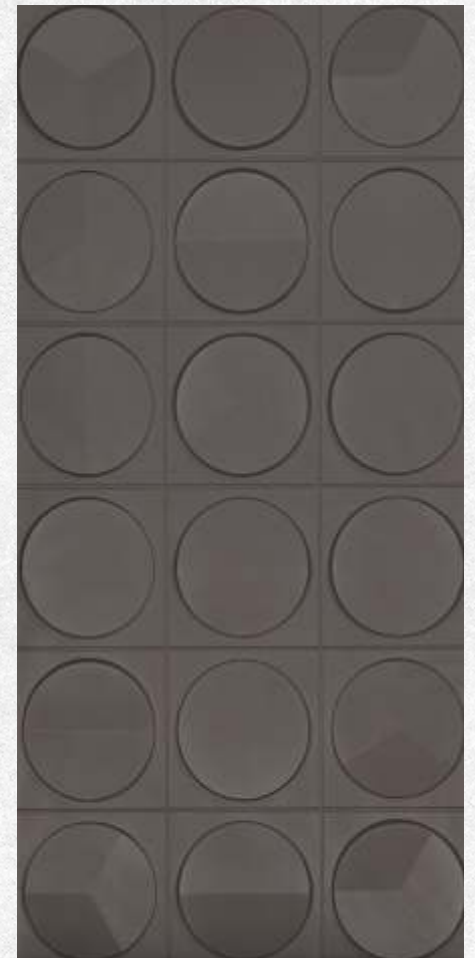
**PC5**  
**Beige**



**PC5**  
**Cement Grey**



**PC5**  
**Charcoal Black**



**PC5**  
**Ash Grey**



# SUPER STONE

PU STONE PANEL



## MOSAIC STRIPS - PC6

SIZE: 1ft x 3.8ft

THICKNESS: 25mm - 30mm



**PC6**  
**Pumpkin Orange**



**PC6**  
**Ice White**



**PC6**  
**Ivory**





**PC6  
Beige**



**PC6  
Charcoal Black**



**PC6  
Cement Grey**



**PC6  
Ash Grey**











# SUPER STONE

PU STONE PANEL

**COLOR  
BOX**®  
*Choice of Your Interiors*

**FLOWING WATER - PC7**

SIZE: 4ft x 2ft  
THICKNESS: 25mm - 35mm



**PC7**  
**Pumpkin Orange**



**PC7**  
**Ice White**



**PC7**  
**Ivory**





**PC7  
Beige**



**PC7  
Cement Grey**



**PC7  
Charcoal Black**



**PC7  
Ash Grey**



# SUPER STONE

PU STONE PANEL

**COLOR  
BOX**®  
*Choice of Your Interiors*

**SHANTON STONE - PC8**

SIZE: 4ft x 2ft  
THICKNESS: 65mm - 75mm



**PC8**  
**Pumpkin Orange**



**PC8**  
**Ice White**



**PC8**  
**Ivory**





**PC8  
Beige**



**PC8  
Cement Grey**



**PC8  
Charcoal Black**



**PC8  
Ash Grey**



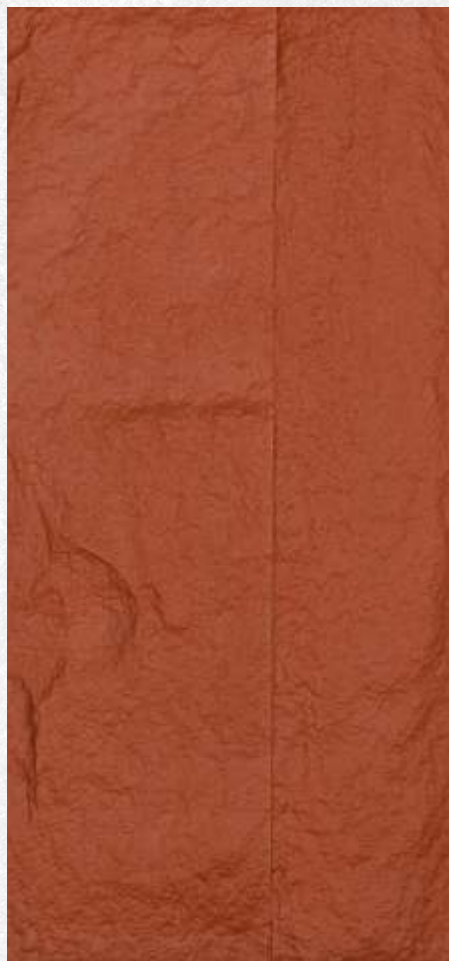
# SUPER STONE

PU STONE PANEL

**COLOR  
BOX**®  
*Choice of Your Interiors*

**MANTON STONE - PC9**

SIZE: 4ft x 2ft  
THICKNESS: 65mm - 75mm



**PC9  
Pumpkin Orange**



**PC9  
Ice White**



**PC9  
Ivory**





**PC9  
Beige**



**PC9  
Cement Grey**



**PC9  
Charcoal Black**



**PC9  
Ash Grey**



# SUPER STONE

PU STONE PANEL

## TERRADO STONE - PC10

SIZE: 4ft x 2.5ft  
THICKNESS: 100mm - 110mm



**PC10**  
**Black Corroded Stone**



**PC10**  
**Cement Grey**



# SUPER STONE

PU STONE PANEL

EGYPTIAN STONE - PC11

SIZE: 5ft x 2.5ft  
THICKNESS: 100mm - 110mm



**PC11**  
**Cement Grey**





**COLOR  
BOX**®  
*Choice of Your Interiors*







# SUPER STONE

PU STONE PANEL

## TURKEY STONE - PC12

SIZE: 8ft x 2ft / 4ft x 2ft  
THICKNESS: 75mm-85mm



**PC12**  
**Pumpkin Orange**



**\* PC12**  
**Ice White**



**PC12**  
**Ivory**





**PC12  
Beige**



**\* PC12  
Cement Grey**



**\* PC12  
Charcoal Black**



**\* PC12  
Ash Grey**



# SUPER STONE

PU STONE PANEL

**COLOR  
BOX**®  
*Choice of Your Interiors*

## GREEK STONE - PC13

SIZE: 1.5ft x 4ft / 1.5ft x 8ft  
THICKNESS: 75mm-85mm



**PC13**  
**Pumpkin Orange**



**PC13**  
**Ice White**



**PC13**  
**Ivory**





**PC13  
Beige**



**PC13  
Cement Grey**



**PC13  
Charcoal Black**



**PC13  
Ash Grey**



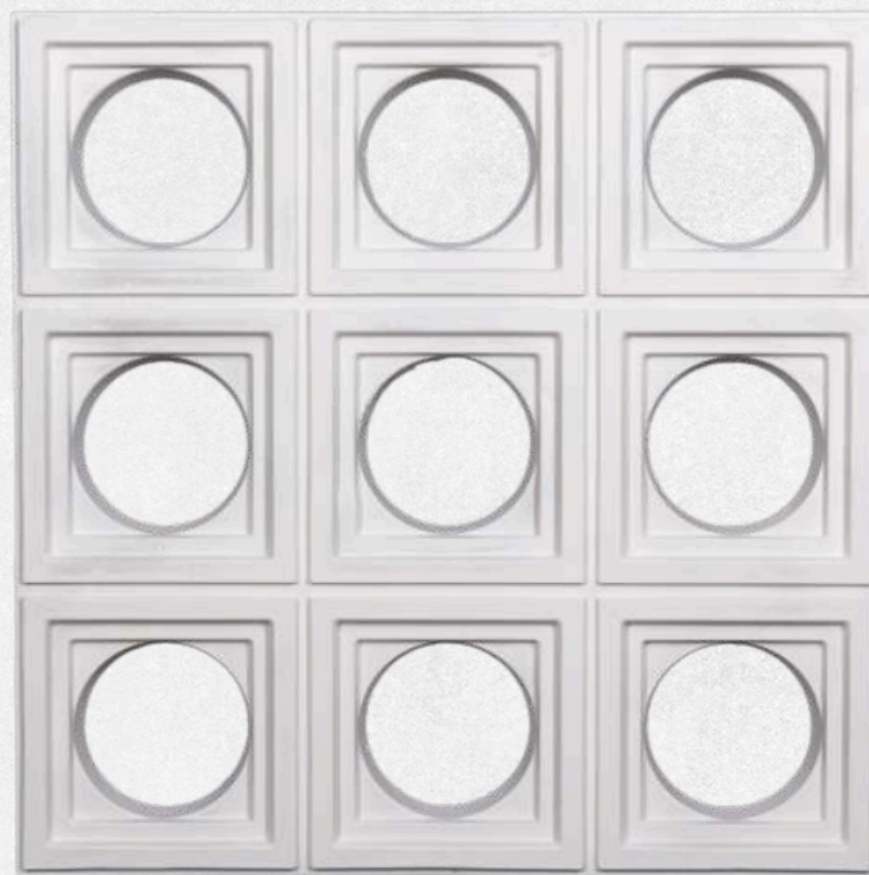
# SUPER STONE

PU STONE PANEL

**COLOR  
BOX**®  
*Choice of Your Interiors*

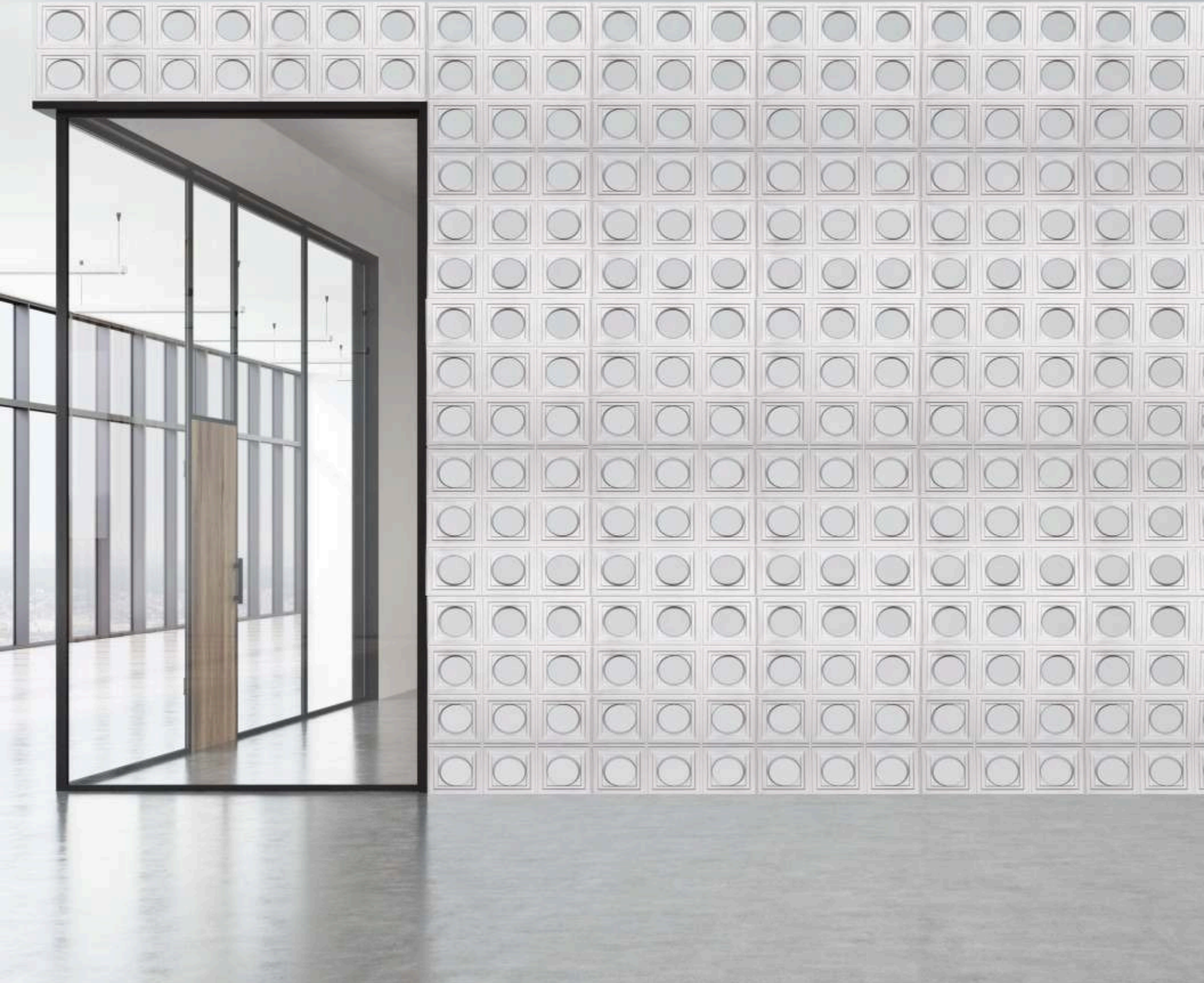
**SQUARE ROUNDS - PC14**

SIZE: 2ft x 2ft  
THICKNESS: 75mm-85mm



**PC14**  
**Ice White**







# SUPER STONE

PU STONE PANEL

**COLOR  
BOX**®  
*Choice of Your Interiors*

JAPANESE STONE PC - 15

SIZE: 4ft x 2ft  
THICKNESS: 75mm-85mm



**PC15**  
**Pumpkin Orange**



**PC15**  
**Ice White**



**PC15**  
**Ivory**





**PC15  
Beige**



**PC15  
Cement Grey**



**PC15  
Charcoal Black**



**PC15  
Ash Grey**